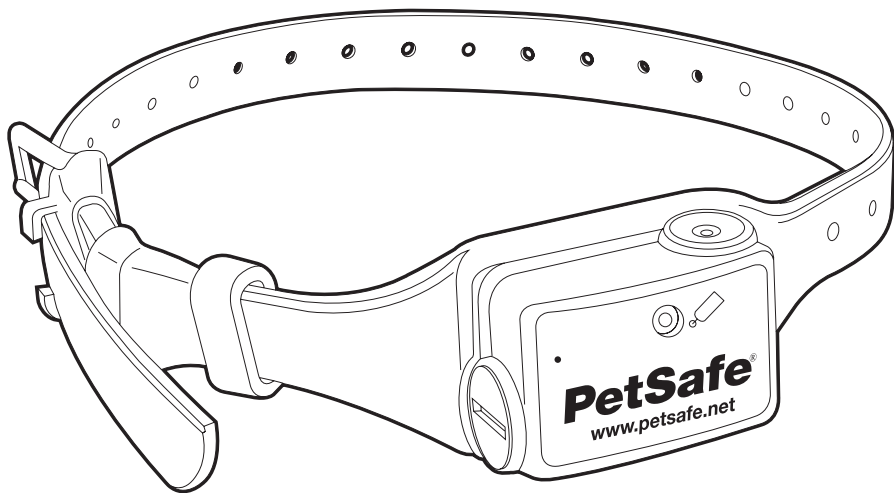


PetSafe® Spray Bark Control Collar Operating Guide

Please read this entire guide before beginning



Thank you for choosing PetSafe®, the best selling brand of electronic training solutions in the world. Our mission is to be the most trusted brand in the pet ownership experience. We want to ensure your pet's safety by providing you with the tools and techniques to successfully train your pet. If you have any questions, please contact the Customer Care Center at 1-800-732-2677 or visit our website at www.petsafe.net.

To get the most protection out of your limited warranty, please register your product within 90 days at www.petsafe.net. By registering, you will enjoy the product's full warranty and should you ever need to call the Customer Care Center, we will be able to help you faster. Additionally, you will not have to save your product receipt as registering serves as proof of purchase. Most importantly, PetSafe will never give or sell your valuable information to anyone.

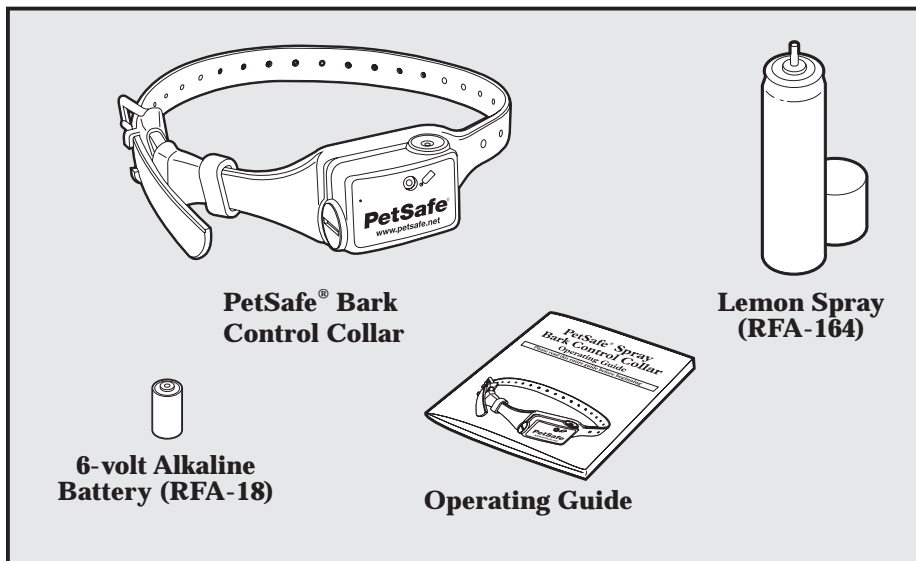
Table of Contents

Components	3
Features.....	3
How the PetSafe Spray Bark Control Collar Works	4
Key Definitions.....	4
Fit the Bark Control Collar.....	5
Ensure a Proper Spray Pattern.....	6
To Insert and Remove the Battery.....	6
Modes of Operation	7
To Fill and Refill the Lemon Spray	7
What to Expect During Use of the Bark Control Collar	8
Regular Maintenance	8
Accessories	9
Frequently Asked Questions	9
Troubleshooting.....	10
Terms of Use and Limitation of Liability.....	11
Product Warranty	11

“In a Tuskegee University study of adult shelter dogs wearing the PetSafe Spray Bark Control Collar for six 30-minute sessions over two weeks, we detected no long-term adverse effects, and all dogs dramatically reduced their barking by the second day.”

Dr. Janet Steiss and Dr. Caroline B. Schaffer
Tuskegee University

Components



Features

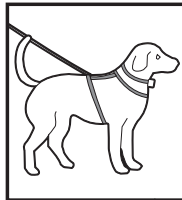
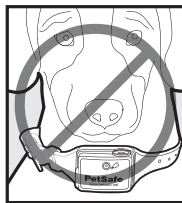
- Nano Technology—the smallest Spray Bark Control Collar available
- Patented Perfect Bark™ detection ensures your dog's bark is the only sound that will cause the correction
- Adjustable collar for neck sizes up to 28" with the QuickFit™ Buckle
- For dogs of all sizes
- All-natural lemon scent is safe and effective
- Waterproof
- Good/Low battery indicator
- 40 sprays per refill
- Low spray indicator
- On/Off button
- Lifetime Limited Warranty

How the PetSafe® Spray Bark Control Collar Works

The PetSafe® Spray Bark Control Collar effectively stops barking when it is worn. The Bark Control Collar has a unique patented sensor that provides the most reliable bark detection available. The Bark Control Collar uses both vibration and sound sensors (dual-detection) to discriminate each bark from other external noises. A burst of lemon-scented spray is emitted to deter barking only if both the vibration from vocal chords and the sound from the bark match the same criteria.

Important:

- **DO NOT** attach a leash to the Bark Control Collar. You may put a separate non-metallic collar on your dog's neck and attach a leash. *Note: Be sure the extra collar does not interfere with the Sensor Probe.*
- Your dog may wear a harness for attaching a leash and/or tags while using the Bark Control Collar.
- Before playing with your dog, turn the unit off and remove the Bark Control Collar. The activity may cause your dog to bark, which could lead to him associating the play with the burst of spray.
- Never leave the Bark Control Collar on for more than 8 consecutive hours.



Key Definitions

Spray Nozzle: Where the spray ejects when your dog's bark is detected.

Sound Activated Sensor: Detects the sound of your dog's bark.

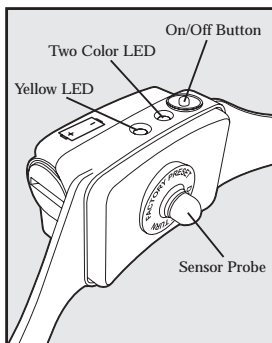
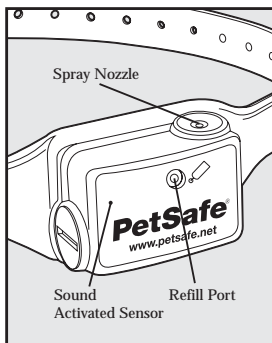
Refill Port: Where the spray is refilled.

Yellow LED: Low spray indicator

Two Color LED: Shows good or low battery **On/Off Button:** Turns the collar on and off, and resets the spray counter.

Sensor Probe: Detects the vibrations of your dog's bark.

Note: The Sensor Probe is not adjustable.

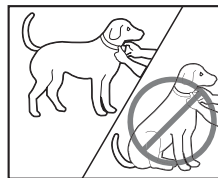


Fit the Bark Control Collar

Important: The proper fit and placement of your Bark Control Collar is important for effective operation.

To assure a proper fit, please follow these steps:

1. Make sure that the Bark Control Collar is turned off.
2. Start with your dog standing comfortably.
3. Place the Bark Control Collar high on your dog's neck close to the ears. Center the Sensor Probe underneath your dog's neck, touching the skin. Make sure the

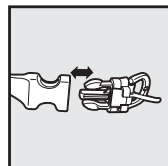


PetSafe® logo in the front of the unit is upright. *Note: It is sometimes necessary to trim the hair around the Sensor Probe to make sure that contact is consistent.*

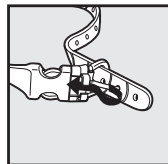
4. The PetSafe QuickFit™ Collar is designed so you can quickly attach and remove the Bark Control Collar from your dog while maintaining the desired fit.



- a. With the Snap Buckle fastened, thread the collar through the Metal Buckle.
- b. Slide the excess collar through the “C” Loop on top of the Snap Buckle. This will hold the collar in place.
- c. Once the collar fit is determined, simply use the Snap Buckle to remove and replace the collar.

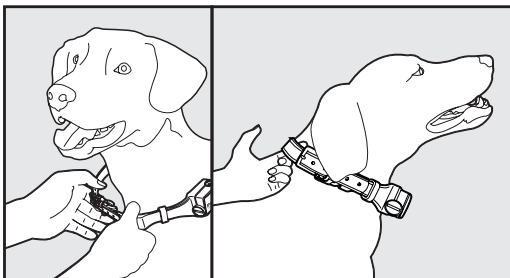


5. The Bark Control Collar should fit snugly, yet loose enough to allow one finger to fit under the strap. Allow your dog to wear the collar for several minutes, then recheck the fit. Check the fit again as your dog becomes more comfortable with the Bark Control Collar.



6. Trim the collar as follows:

- a. Mark the desired length of the collar with a pen. Allow for growth if your dog is young or grows a thick winter coat.
- b. Remove the Bark Control Collar from your dog and cut off excess.

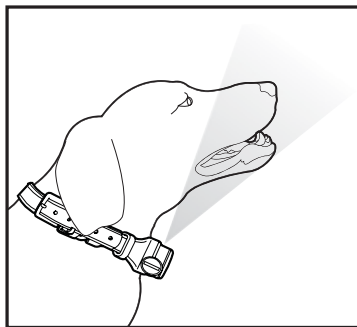


Important: The Bark Control Collar should not be worn for more than 8 hours out of every 24-hour period.

Ensure a Proper Spray Pattern

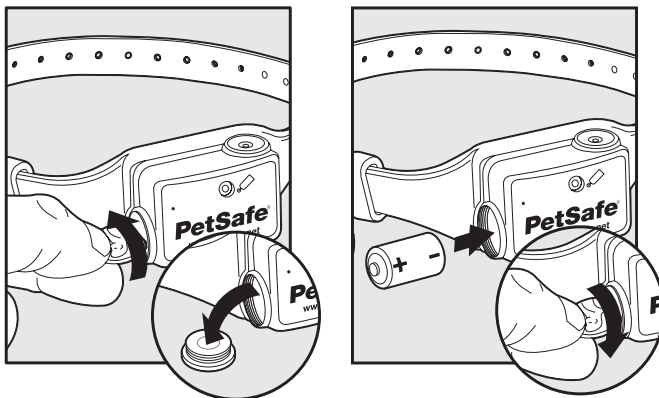
For the PetSafe® Spray Bark Control Collar to perform properly, the nozzle must be positioned correctly and there must be a clear path from the Spray Nozzle to your dog's snout. Follow these steps:

1. Make sure the PetSafe logo on the front of the unit is upright and the Spray Nozzle is angled out and pointing up towards the dog's snout.
2. For long-haired dogs, it may be necessary to trim the neck hairs along the path of the spray. It is important that the spray reaches the dog's snout to be effective.



To Insert and Remove the Battery

Note: Do not install the battery while the Bark Control Collar is on your dog.



A replacement PetSafe battery (RFA-18) can be found at many retailers. Contact the Customer Care Center at 1-800-732-2677 or visit our web site at www.petsafe.net to locate a retailer near you.

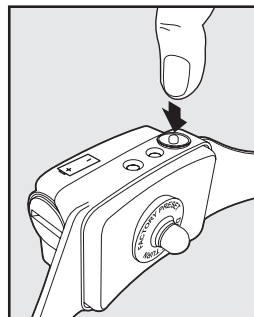
Battery Life

Average battery life is 2 to 4 months, depending on how often your dog barks. However, due to greater use during your dog's training, your first battery may not last as long as replacement batteries.

Modes of Operation

- To activate the unit, press the On/Off Button until the Green LED Light comes on and release. The Green LED Light will flash once every 5 seconds.
- To turn the unit off, press the On/Off Button and hold until the Red LED Light flashes.

Note: The Yellow LED Light will flash briefly before the Red LED Light appears. This indicates the reset sequence.



Function and Response Table

Function	LED Light Response
Unit is on	Green LED Light flashes once every 5 seconds
Low battery condition	Red LED Light flashes 3 times every 5 seconds
Low spray warning	Yellow LED Light appears

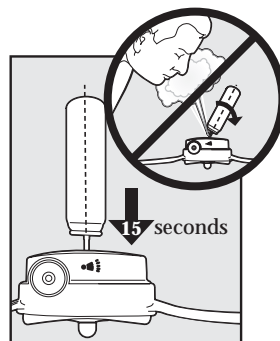
To Fill and Refill the Lemon Spray

- Remove the collar from your dog.
- Turn the unit off.
- Hold the Lemon Spray can upright and firmly press the nozzle down into the Refill Port. Hold for 15 seconds and remove.

Note: If spray leaks out, you may need to press harder to complete the seal.

- Turn the unit on.

Important: To reset the Spray Counter, press the On/Off Button until the Yellow LED Light comes on, and release the button. The Green LED Light will resume to 1 flash every 5 seconds.



Note: It is important that the On/Off Button be released immediately after the Yellow LED Light comes on or the unit will be turned off.

What to Expect During Use of the Bark Control Collar

Important: Do not leave your dog alone the first few times he wears the Bark Control Collar.

Place the Bark Control Collar properly on your dog and wait nearby until he barks. Most dogs will understand very quickly that the Bark Control Collar is disrupting their urge to bark and will relax and stop barking. Because the burst of Lemon Spray from the Bark Control Collar may be surprising or startling at first, some dogs may bark more at the initial correction.

On rare occasions, a dog may get into a bark-spray-bark-spray cycle. If this happens, reassure your dog with calm, soothing tones. As your dog relaxes, he will understand that if he becomes quiet, he will not receive any more spray bursts. The small minority of dogs that have this reaction should only have it the first time they wear the Bark Control Collar.

You should notice a reduction in your dog's barking within the first couple of days that he wears the Bark Control Collar. At this point, it is important to remember the learning process is still not complete. Dogs will "test" this new learning experience and will increase their attempts to bark. This usually occurs during the second week a dog wears the Bark Control Collar. If this does occur, remain consistent and do not alter your use of the Bark Control Collar. You must place the Bark Control Collar on your dog in every situation when you expect him to be quiet. If your dog is not wearing the Bark Control Collar, he may resume barking and his learning would suffer a setback.

Regular Maintenance

- For comfort, safety, and effectiveness of this product, please ensure that you check the fit of your pet's collar frequently.
- The Bark Control Collar should not be worn for more than 8 hours out of every 24-hour period to prevent irritation. If any skin irritation is observed, discontinue the use of the collar for a few days. If the condition persists beyond 48 hours, see your veterinarian.
- The spray from the Bark Control Collar may stick to the hair under your dog's snout. Clean your dog's hair weekly with a washcloth and a mild hand soap. Rinse and dry your dog's neck thoroughly.
- If the spray accumulates on the Bark Control Collar, wipe the receiver clean with a damp cloth and dry thoroughly.

Accessories

To purchase additional accessories for your PetSafe® Bark Control Collar, contact the Customer Care Center at 1-800-732-2677 or visit our website at www.petsafe.net to locate a retailer near you.

Component	Part Number
Battery - one pack	RFA-18
Lemon Spray Canister (MSDS sheet available upon request)	RFA-164
Snap Buckle	RFA-226

Frequently Asked Questions

Will my dog stop barking completely?	<ul style="list-style-type: none">• The Bark Control Collar effectively stops barking when it is worn. It should only be worn during periods of unwanted barking.
Will another dog's bark set off the Bark Control Collar?	<ul style="list-style-type: none">• No.
Is the Bark Control Collar safe and humane?	<ul style="list-style-type: none">• Yes. The Bark Control Collar is designed to get your dog's attention, not to punish him.
Will the Bark Control Collar work for my dog?	<ul style="list-style-type: none">• The Bark Control Collar is safe and effective for all breeds and sizes of dogs.
Is the spray harmful?	<ul style="list-style-type: none">• The lemon spray uses a lemon fragrance that dogs find unpleasant. It dissipates quickly and is safe for humans and pets.
Will this work with long-haired dogs?	<ul style="list-style-type: none">• Yes. It may be necessary to trim the hair on your dog's neck so it does not block the spray from reaching his snout.
Does the spray need to hit my dog's nose?	<ul style="list-style-type: none">• No. The spray is very fine and simply creates a mist in the region of the snout.

Troubleshooting

The Bark Control Collar does not spray.	<ul style="list-style-type: none">• Ensure that the battery is properly installed.• Replace the battery.• Refill the Lemon Spray.• If the Bark Control Collar still does not spray, contact the Customer Care Center at 1-800-732-2677.
My Bark Control Collar sprays, but my dog keeps barking (does not respond to the burst of spray).	<ul style="list-style-type: none">• Tighten the Bark Control Collar and make sure the Sensor Probe is centered on the front of the dog's neck.• Check to make sure the Spray Nozzle points towards the dog's snout.• Make sure your dog's hair does not block the spray. If so, trim the hair so the spray can reach the snout area.• If your dog still does not respond, contact the Customer Care Center at 1-800-732-2677.
When I try to refill the Lemon Spray, the spray leaks out around the Spray Nozzle.	<ul style="list-style-type: none">• Hold the Lemon Spray can upright. If it is held at an angle, it will not create a good seal.• Press firmly on the Lemon Spray can to create a good seal.• If the spray continues to leak, contact the Customer Care Center at 1-800-732-2677.

Terms of Use and Limitation of Liability

1. Terms of Use

This Product is offered to you conditioned upon your acceptance without modification of the terms, conditions and notices contained herein. Usage of this Product implies acceptance of all such terms, conditions, and notices.

2. Proper Use

This Product is designed for use with pets where training is desired. The specific temperament of your pet may not work with this Product. We recommend that you not use this Product if your pet is aggressive. If you are unsure whether this is appropriate for your pet please consult your veterinarian or certified trainer.

Proper use includes reviewing the entire Guide provided with your Product and any specific Caution statements.

3. No Unlawful or Prohibited Use

This Product is designed for use with pets only. This pet training device is not intended to harm, injure or provoke. Using this Product in a way that is not intended could result in violation of Federal, State or local laws.

4. Limitation of Liability

In no event shall Radio Systems® Corporation be liable for any direct, indirect, punitive, incidental, special or consequential damages, or any damages whatsoever arising out of or connected with the use or misuse of this Product. Buyer assumes all risks and liability from the use of this Product.

5. Modification of Terms and Conditions

Radio Systems Corporation reserves the right to change the terms, conditions and notices under which this Product is offered.

Product Warranty

Please register your product online at www.petsafe.net. All parts are covered under warranty for the life of this product. Labor is covered for the first year of ownership. Thereafter, there is a minimum service charge for the repair or replacement of the product. Misuse, loss, damage by pet or improper use or handling is not covered. PetSafe® will not pay for loss of time, inconvenience, loss of use of your product or any incidental or consequential damage. Warranty void if product resold.

Please contact the Customer Care Center at 1-800-732-2677 if you need service or for help in troubleshooting and, if needed, to arrange a repair for your product (a service charge may apply). Also, please visit our website at www.petsafe.net for Frequently Asked Questions and Troubleshooting Tips.

**Radio Systems Corporation
10427 Electric Avenue
Knoxville, TN 37932
1-800-732-2677
www.petsafe.net
400-843/1**

©Copyright 2007, Radio Systems Corporation